



## MAIN LEVEL

**ENTRY FOYER**

**FORMAL DINING ROOM**

**LIVING ROOM**

Wood Burning Fireplace Flanked by Two Built-ins  
Large Picture Window Overlooking the Backyard

**EAT-IN KITCHEN**

Breakfast Nook with Access to Back Patio

**LAUNDRY ROOM**

**PRIMARY EN-SUITE**

Two Walk-in Closets  
Sitting Area  
Primary Bathroom with Oversized Shower,  
Soaking Tub, and Dual Sink Vanity

**GUEST EN-SUITE**

**PRIVATE OFFICE**

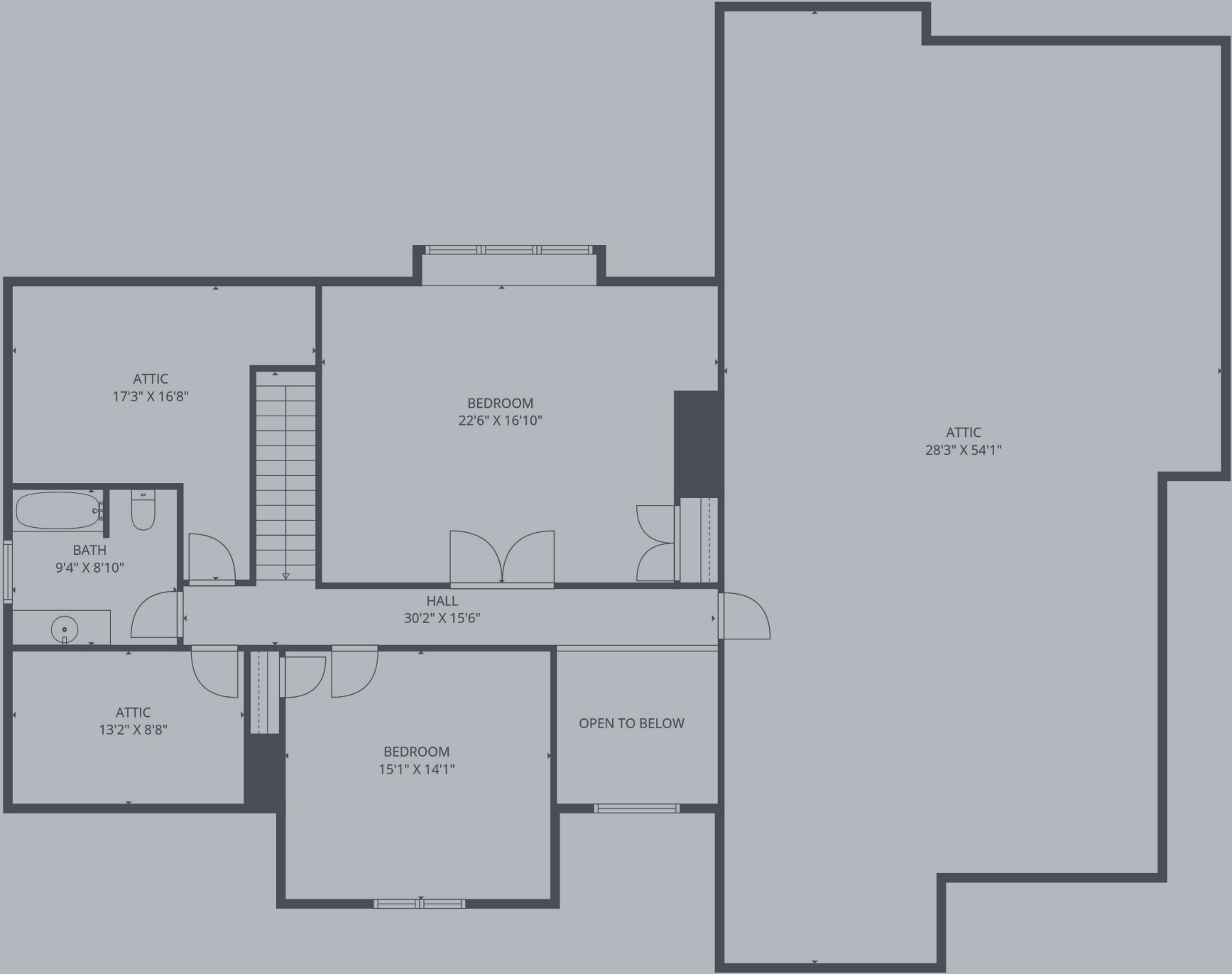
**ATTACHED 2-CAR GARAGE**

SECOND LEVEL

2 BEDROOMS

1 FULL BATHROOM

1,937 SF+/- UNFINISHED SPACE



LOWER LEVEL

